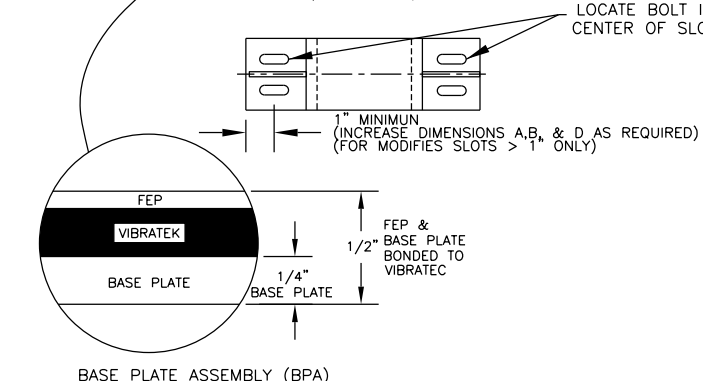
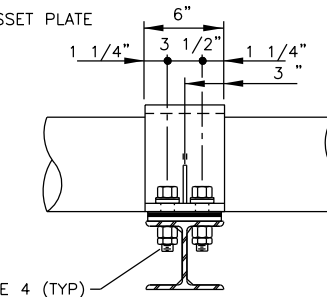
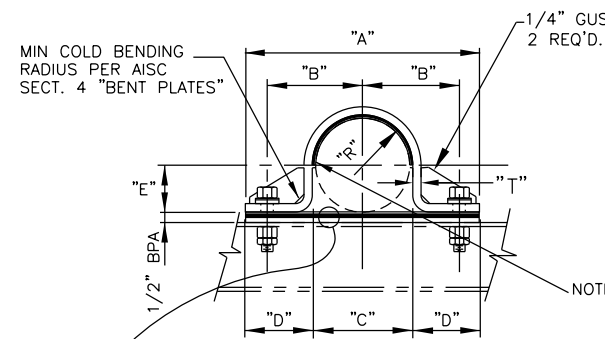


FOR PIPE SIZES 3/4" THROUGH 3"

FOR PIPE SIZES 4" THROUGH 36"

1/4" THICK FEP/VIBRATEK PADS (TYP)
SAME WIDTH AS CLAMP, LENGTH AS SHOWN
SEE NOTE 2.C



TABLE

PIPE SIZE	A	B	C	D	E	*R	T	BOLT LENGTH
.75	8.55	3.5	1.55	3.5	0.525	.775	0.375	3.250
1.0	8.815	3.5	1.815	3.5	0.6575	.9075	0.375	3.250
1.5	9.4	3.5	2.4	3.5	0.95	1.2	0.375	3.250
2	9.875	3.5	2.875	3.5	1.1875	1.4375	0.375	3.250
3	11	4	4	3.5	1.75	2	0.375	3.250
4	12	4.5	5	3.5	2.25	2.5	0.375	3.250
6	14.125	5.625	7.125	3.5	3.3125	3.5625	0.375	3.250
8	16.5	6.75	9.125	3.6875	4.3125	4.5625	0.375	3.250
10	19.5	8.25	11.25	4.125	5.375	5.625	0.375	3.250
12	21.5	9.25	13.25	4.125	6.375	6.625	0.5	3.250
14	23.5	10.25	14.5	4.5	7	7.25	0.5	3.250
16	25.5	11.25	16.5	4.5	8	8.25	0.5	3.250
18	27.5	12.25	18.5	4.5	9	9.25	0.5	3.250
20	29.5	13.25	20.5	4.5	10	10.25	0.5	3.250
24	33.5	15.25	24.5	4.5	12	12.25	0.5	3.250
30	39.5	18.25	30.5	4.5	15	15.25	0.5	3.250
36	45.5	21.25	36.5	4.5	18	18.25	0.5	3.250

NOTE: *DIM "R" IS PIPE RADIUS + FEP/VIBRATEK THICKNESS

LOAD TABLE

PIPE SIZE	VERTICAL LOAD UPWARD LIFT-LBS	LATERAL LOAD-LBS	AXIAL LOAD-LBS	REQUIRED TORQUE PER BOLT ft/lb
4	14,500	5,000	2,600	102
6	14,500	5,000	3,800	148
8	18,500	4,500	5,000	195
10	18,500	4,500	6,200	242
12	23,000	4,000	7,400	289
14	23,000	3,500	8,000	313
16	23,000	3,500	8,000	313
18	23,000	3,500	8,000	313
20	23,000	3,500	8,000	313

NOTES LOAD TABLE:

- THE TABLE WILL BE AFFECTED BY:
 - BOLT PRELOAD
 - CHANGE OF CLAMP HANGE OF CLAMP LINER PADS WITH DIFFERING COEFFICIENTS OF FRICTION OR COMPRESSIVE STRENGTH
- THE TABLE IS MEANT AS A REFERENCE AND MAY BE AFFECTED BY THE FOLLOWING:
 - LOAD RATINGS ASSUME LOADS ARE APPLIED INDEPENDENT OF ONE ANOTHER. COMBINATIONS OF LOADS MAY AFFECT LOAD RATINGS.
 - ACTUAL PERMISSIBLE LOADS SHOULD BE DETERMINED ON A CASE-BY-CASE BASIS.

GENERAL NOTES:

- FEP/VIBRATEK HDC PADS
 - TEMP RANGE: -65°F TO +400°F
 - COEFFICIENT OF FRICTION: ≤ 0.
 - ARE THE SAME WIDTH AS THE CLAMP
- BOLTS AND NUTS:
 - ASTM A-325T 3/4" DIA x 3 1/4" LONG GALVANIZED UNC HEX HEAD BOLT, COMPLETE WITH A VIBRATEK GALVANIZED CARBON STEEL 2" DIA. X 3/4" FLAT WASHER ASSMY & 1 EA GALVANIZED A-563DH 3/4" UNC FULL NUT AND 1 EA GALVANIZED A-563DH 3/4" UNC HALF LOCK NUT
 - VIBRATEK WASHER ASSMY TO BE INSTALLED UNDER THE HEAD OF THE BOLT WITH THE STEEL WASHER SIDE UP
 - FULL NUT TO BE TIGHTEN **HAND TIGHT ONLY + 1/2 TURN** AND LOCKED WITH THE 1/2 NUT
 - BOLT SETS TO BE PROVIDED BY ADVANCED PIPING PRODUCTS.
- CLAMP AND BOTTOM PLATE MATERIAL TO BE CARBON STEEL A36 GALVANIZED.
- HOLD DOWN CLAMP ASSEMBLIES ARE MANUFACTURED BY ADVANCED PIPING PRODUCTS, HOUSTON, TX.
TEL. (713)956-2922 EMAIL ADDRESS sales@appmfg.com

DWN. M.S.	DATE	10/10/22
CHK.		
ENG.		
MFG.	APP	
APPR.		
NEXT ASSY	QTY	

5611 Guhn Road Suite A1 Houston, TX 77040
Tel. 713-956-2922 Fax 713-956-4090
www.appmfg.com

APP VTK-A HOLD DOWN CLAMP	
DWG DESCRIPTION VIBRATEK PIPE HOLD DOWN CLAMP	
SIZE A	VTK TYPE-B
SCALE None	REV. 10
SHEET 1	OF 1